



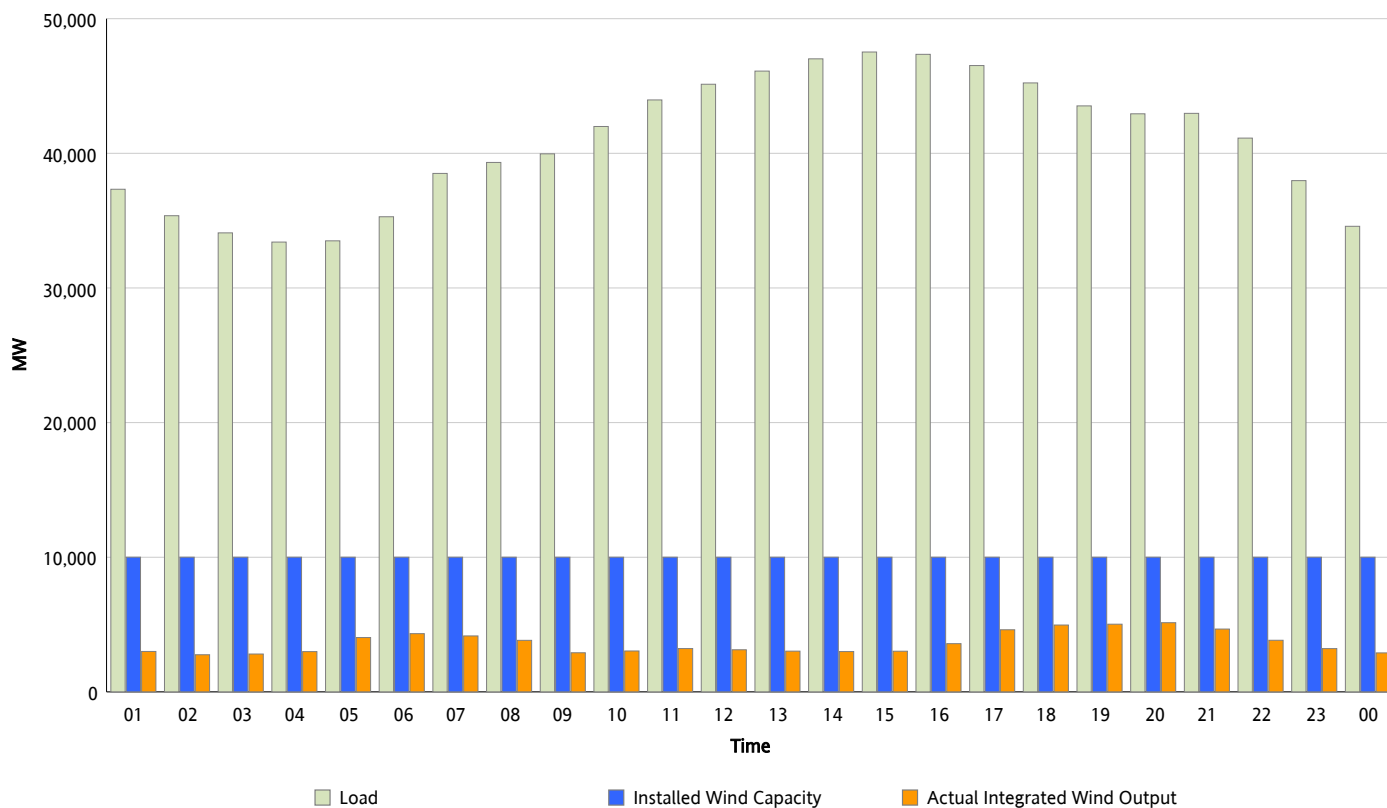
ERCOT Grid Operations

Wind Integration Report : 09/13/2012

Peak Load	47,525 MW
Load Peak Hour (HE)	15
Wind Over Peak	3,021 MW
Wind Record 06/19/12	8,368 MW
Max Wind Value*	5,203 MW
Wind Peak Time	19:29
Wind Integration %	12.12 %

Hourly Average Actual Load vs. Actual Wind Output

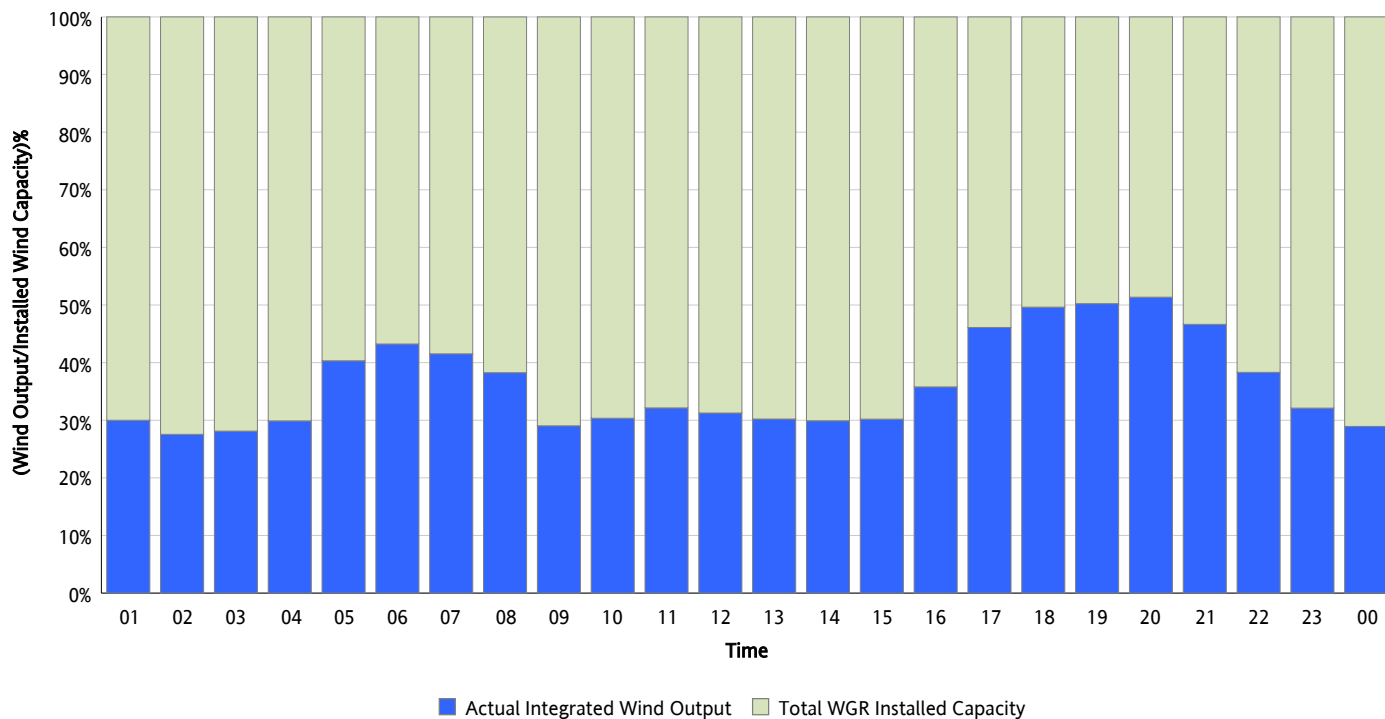
09/13/2012



* Wind Record and Wind Max represent instantaneous values and the rest of the values are integrated over the hour

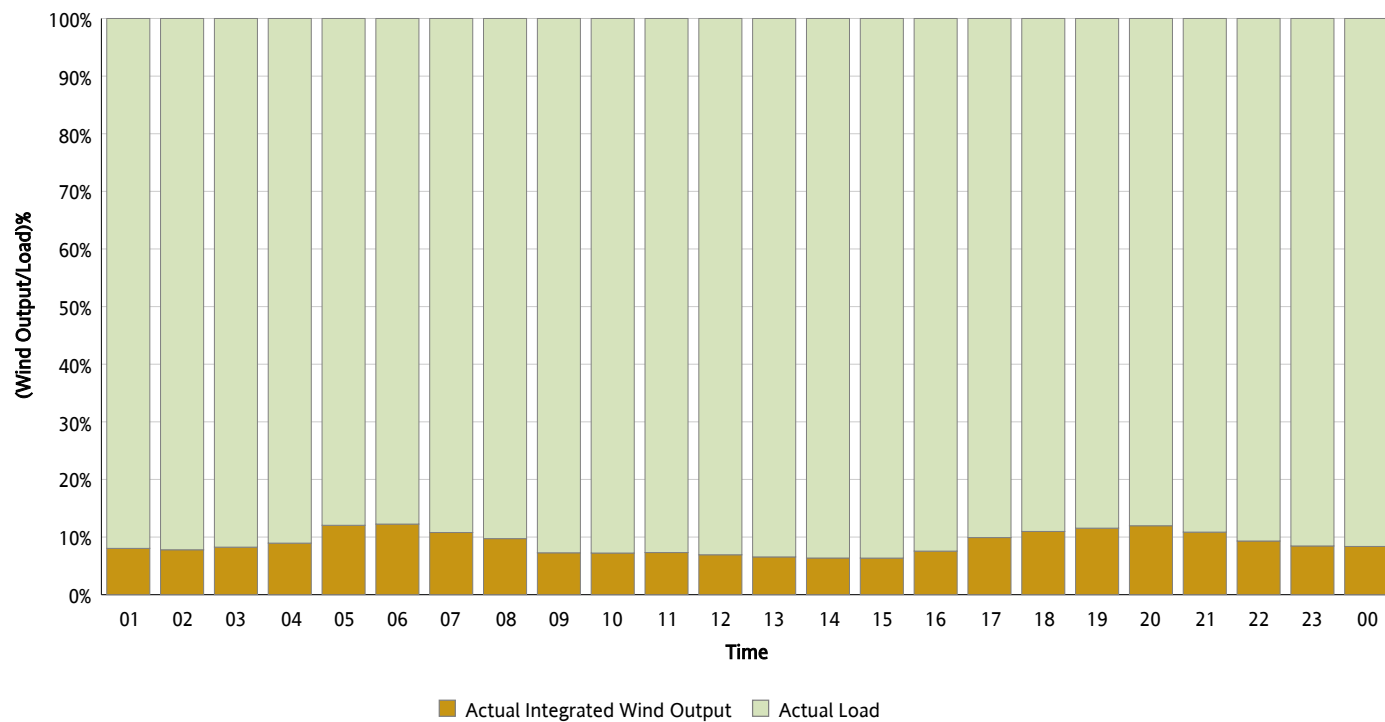
Actual Wind Output as a Percentage of the Total Installed Wind Capacity

09/13/2012



Actual Wind Output as a Percentage of the ERCOT Load

09/13/2012



ERCOT Load vs. Actual Wind Output

09/06/2012 - 09/13/2012

